



Light Up the Green World . LED Downlights Expert 7 Years



**1. Model No. TD051A  
LED Downlight**

TD051B

TD051D

| Model No.  | Power | Lumen(lm) | Driver Brand   | LED Style | CCT(K)                  | Beam Angle | Power Factor | CRI     | Size(mm)    | Cutout(mm) |
|------------|-------|-----------|----------------|-----------|-------------------------|------------|--------------|---------|-------------|------------|
| TD051-2.5F | 5W    | 400lm     | Philips Driver | CREE COB  | 3000K<br>4000K<br>5000K | 50°        | >0.90        | Ra80/90 | φ89.7*H56   | φ75        |
| TD051-3F   | 9W    | 790lm     |                |           |                         |            |              |         | φ110*H68    | φ90        |
| TD051-4F   | 15W   | 1300lm    |                |           |                         |            |              |         | φ137.5*H82  | φ120       |
| TD051-5F   | 20W   | 1700lm    |                |           |                         |            |              |         | φ165*H91    | φ140       |
| TD051-6F   | 30W   | 2600lm    |                |           |                         |            |              |         | φ195*H107   | φ170       |
| TD051-8F   | 40W   | 3500lm    |                |           |                         |            |              |         | φ235*H127.5 | φ200       |



**2. Model No. TD053A  
IP54 COB Downlight**

TD053B

TD053C

| Model No. | Power | Lumen(lm) | Driver Brand   | LED Style | CCT(K)                  | Beam Angle | Power Factor | CRI     | Size(mm)  | Cutout(mm) |
|-----------|-------|-----------|----------------|-----------|-------------------------|------------|--------------|---------|-----------|------------|
| TD053-3F  | 10W   | 850lm     | Philips Driver | CREE COB  | 3000K<br>4000K<br>5000K | 50°        | >0.90        | Ra80/90 | φ110*H61  | φ95        |
| TD053-4F  | 15W   | 1300lm    |                |           |                         |            |              |         | φ135*H69  | φ110       |
| TD053-5F  | 25W   | 2200lm    |                |           |                         |            |              |         | φ160*H75  | φ130       |
| TD053-6F  | 40W   | 3500lm    |                |           |                         |            |              |         | φ185*H100 | φ165       |
| TD053-8F  | 60W   | 4800lm    |                |           |                         |            |              |         | φ240*H120 | φ205       |

Warranty 3-5 Years

1. [www.lhwyled.com](http://www.lhwyled.com)



Light Up the Green World . LED Downlights Expert 7 Years



**3. Model No. TD033A  
LED Downlight**

TD033B

TD033C

| Model No. | Power | Lumen(lm) | Driver Brand   | LED Style | CCT(K)                  | Beam Angle | Power Factor | CRI     | Size(mm)  | Cutout(mm) |
|-----------|-------|-----------|----------------|-----------|-------------------------|------------|--------------|---------|-----------|------------|
| TD033-3F  | 9W    | 750lm     | Philips Driver | CREE COB  | 3000K<br>4000K<br>5000K | 60°        | >0.90        | Ra80/90 | φ108*H52  | φ95        |
| TD033-4F  | 15W   | 1300lm    |                |           |                         |            |              |         | φ142*H65  | φ125       |
| TD033-5F  | 20W   | 1700lm    |                |           |                         |            |              |         | φ158*H75  | φ140       |
| TD033-6F  | 25W   | 2200lm    |                |           |                         |            |              |         | φ185*H88  | φ170       |
| TD033-8F  | 40W   | 3500lm    |                |           |                         |            |              |         | φ226*H108 | φ210       |
| TD033-10F | 60W   | 5000lm    |                |           |                         |            |              |         | φ282*H130 | φ265       |



**4. Model No. TD041A  
Horn Downlight**

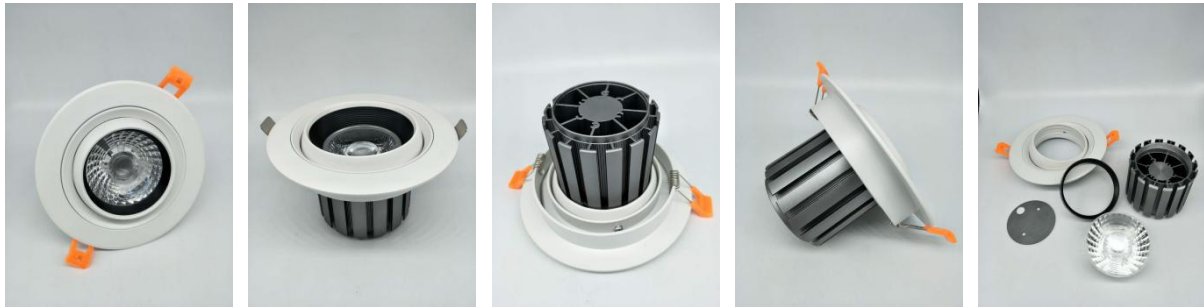
| Model No. | Power | Lumen(lm) | Driver Brand   | LED Style | CCT(K)                  | Beam Angle  | Power Factor | CRI     | Size(mm)    | Cutout(mm) |
|-----------|-------|-----------|----------------|-----------|-------------------------|-------------|--------------|---------|-------------|------------|
| TD041-3F  | 9W    | 750lm     | Philips Driver | CREE COB  | 3000K<br>4000K<br>5000K | 24°         | >0.90        | Ra80/90 | φ105*H90.5  | φ95        |
| TD041-4F  | 15W   | 1300lm    |                |           |                         | 60°         |              |         | φ139*H110.5 | φ125       |
| TD041-5F  | 25W   | 2200lm    |                |           |                         | φ162*H125.5 |              |         | φ140        |            |
| TD041-6F  | 40W   | 3500lm    |                |           |                         | φ185*H145   |              |         | φ170        |            |

Warranty 3-5 Years

2. [www.lhwyled.com](http://www.lhwyled.com)

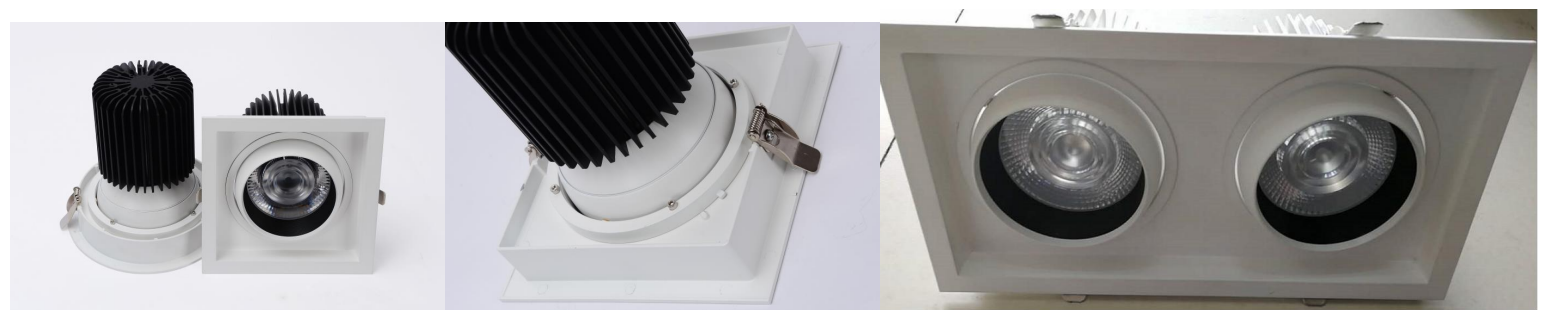


Light Up the Green World . LED Downlights Expert 7 Years



**5. Model No. SD001  
LED Gimbal Downlight**

| Model No. | Power | Lumen(lm) | Driver Brand   | LED Style | CCT(K)                  | Beam Angle | Power Factor | CRI     | Size(mm)  | Cutout(mm) |
|-----------|-------|-----------|----------------|-----------|-------------------------|------------|--------------|---------|-----------|------------|
| SD001-3F  | 7W    | 550lm     | Philips Driver | CREE COB  | 3000K<br>4000K<br>5000K | 24°        | >0.90        | Ra80/90 | φ86*H68   | φ70        |
| SD001-4F  | 12W   | 1000lm    |                |           |                         |            |              |         | φ118*H65  | φ90        |
| SD001-5F  | 20W   | 1700lm    |                |           |                         |            |              |         | φ140*H80  | φ120       |
| SD001-6F  | 30W   | 2500lm    |                |           |                         |            |              |         | φ160*H125 | φ145       |



**6. Model No. SD004  
LED Square Downlight**

| Model No. | Power | Lumen(lm) | Driver Brand   | LED Style | CCT(K)                  | Beam Angle        | Power Factor | CRI     | Size(mm)     | Cutout(mm) |
|-----------|-------|-----------|----------------|-----------|-------------------------|-------------------|--------------|---------|--------------|------------|
| SD004A    | 30W   | 2400lm    | Philips Driver | CREE COB  | 3000K<br>4000K<br>5000K | 12°<br>24°<br>36° | >0.90        | Ra80/90 | SQ175*H145   | 150*150    |
| SD004B    | 50W   | 4000lm    |                |           |                         |                   |              |         | SQ175*H180   | 150*150    |
| SD001C    | 2*30W | 2*2400lm  |                |           |                         |                   |              |         | 175*325*H145 | 150*300    |
| SD001D    | 2*50W | 2*4000lm  |                |           |                         |                   |              |         | 175*325*H180 | 150*300    |

Warranty 3-5 Years

3. [www.lhwyled.com](http://www.lhwyled.com)



Light Up the Green World . LED Downlights Expert 7 Years



7. Model No. TD056  
SMD COB Downlight

| Model No. | Power | Lumen(lm) | Driver Brand   | LED Style | CCT(K)   | Beam Angle | Power Factor | CRI     | Size(mm) | Cutout(mm) |
|-----------|-------|-----------|----------------|-----------|----------|------------|--------------|---------|----------|------------|
| TD056-4F  | 12W   | 100lm     | Philips Driver | SanAn COB | 3000K    | 60°        | >0.90        | Ra80/90 | φ148*H63 | φ125       |
| TD056-6F  | 20W   | 1600lm    |                |           | 4000K    |            |              |         | φ195*H63 | φ168       |
| TD056-8F  | 30W   | 2400lm    |                |           | 6000K    |            |              |         | φ230*H63 | φ190       |
| TD056-10F | 30W   | 2400lm    |                |           | φ280*H88 |            |              |         | φ195     |            |



Model No. DLM001-A

DLM001-B

DLM001-C

DLM001-D



8. Model No. DLM001-E  
Modular Downlight

DLM001-F

DLM001-C



**Light Up the Green World . LED Downlights Expert 7 Years**

| Model No. | Power | Lumen(lm) | Driver Brand   | LED Style | CCT(K) | Beam Angle | Power Factor | CRI     | Size(mm)   | Cutout(mm) |
|-----------|-------|-----------|----------------|-----------|--------|------------|--------------|---------|------------|------------|
| DLM001-A  | 10W   | 850lm     | Philips Driver | CREE      | 3000K  | 15°        | >0.90        | Ra80/90 | SQ95*H98   | 85*85      |
|           | 15W   | 1300lm    |                |           |        | 24°        |              |         | SQ95*H103  |            |
| DLM001-B  | 10W   | 850lm     |                |           |        | 36°        |              |         | SQ105*H113 | 95*95      |
|           | 15W   | 1300lm    |                |           |        |            |              |         | SQ105*H118 |            |
| DLM001-C  | 10W   | 850lm     |                |           |        | SQ95*H118  |              |         | 85*85      |            |
|           | 15W   | 1300lm    |                |           |        | SQ95*H123  |              |         |            |            |
| DLM001-D  | 10W   | 850lm     |                | φ95*H98   | φ85    |            |              |         |            |            |
|           | 15W   | 1300lm    |                | φ95*H103  |        |            |              |         |            |            |
| DLM001-E  | 10W   | 850lm     |                | φ90*H105  | φ80    |            |              |         |            |            |
|           | 15W   | 1300lm    |                | φ90*H110  |        |            |              |         |            |            |
| DLM001-F  | 10W   | 850lm     |                | φ85*H105  | φ77    |            |              |         |            |            |
|           | 15W   | 1300lm    |                | φ85*H112  |        |            |              |         |            |            |



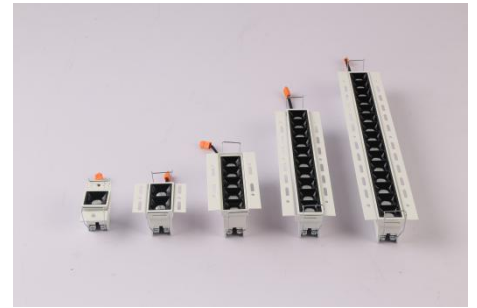
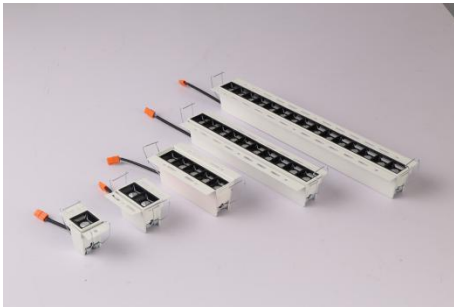
**9. Model No. DLM002-A  
Trimless Modular Downlight**

| Model No. | Power | Lumen(lm) | Driver Brand   | LED Style | CCT(K) | Beam Angle | Power Factor | CRI     | Size(mm) | Cutout(mm) |
|-----------|-------|-----------|----------------|-----------|--------|------------|--------------|---------|----------|------------|
| DLM002-A  | 5W    | 400lm     | Philips Driver | CREE      | 3000K  | 15°        | >0.90        | Ra80/90 | φ91*H78  | φ92        |
|           | 10W   | 800lm     |                |           |        | 24°        |              |         | φ91*H115 |            |
|           |       |           |                | COB       | 4000K  | 38°        |              |         |          |            |
|           |       |           |                |           | 6000K  | 55°        |              |         |          |            |

**Warranty 3-5 Years**

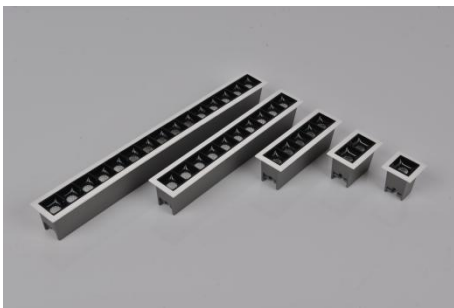


Light Up the Green World . LED Downlights Expert 7 Years



**10. Model No. XTD-B**  
**Trimless Linear Downlight**

| Model No. | Power | Lumen(lm) | Driver Brand   | LED Style     | CCT(K)                  | Beam Angle        | Power Factor | CRI     | Size(mm)   | Cutout(mm) |
|-----------|-------|-----------|----------------|---------------|-------------------------|-------------------|--------------|---------|------------|------------|
| XTD-B-01  | 2W*1  | 150lm     | Philips Driver | CREE<br>Osram | 3000K<br>4000K<br>5000K | 15°<br>30°<br>45° | >0.90        | Ra80/90 | 35*35*H49  | 42*42      |
| XTD-B-02  | 2W*2  | 300lm     |                |               |                         |                   |              |         | 65*35*H49  | 72*42      |
| XTD-B-05  | 2W*5  | 800lm     |                |               |                         |                   |              |         | 138*35*H49 | 144*42     |
| XTD-B-10  | 2W*10 | 1700lm    |                |               |                         |                   |              |         | 270*35*H49 | 277*42     |
| XTD-B-15  | 2W*15 | 2500lm    |                |               |                         |                   |              |         | 403*35*H49 | 409*42     |



**11. Model No. XTD-A**  
**LED Linear Downlight with Trim**

| Model No. | Power | Lumen(lm) | Driver Brand   | LED Style     | CCT(K)                  | Beam Angle        | Power Factor | CRI     | Size(mm)   | Cutout(mm) |
|-----------|-------|-----------|----------------|---------------|-------------------------|-------------------|--------------|---------|------------|------------|
| XTD-A-01  | 2W*1  | 150lm     | Philips Driver | CREE<br>Osram | 3000K<br>4000K<br>5000K | 15°<br>30°<br>45° | >0.90        | Ra80/90 | 45*45*H49  | 37*37      |
| XTD-A-02  | 2W*2  | 300lm     |                |               |                         |                   |              |         | 75*45*H49  | 68*37      |
| XTD-A-05  | 2W*5  | 800lm     |                |               |                         |                   |              |         | 147*45*H49 | 140*37     |
| XTD-A-10  | 2W*10 | 1700lm    |                |               |                         |                   |              |         | 280*45*H49 | 273*37     |
| XTD-A-15  | 2W*15 | 2500lm    |                |               |                         |                   |              |         | 415*45*H49 | 405*37     |

Warranty 3-5 Years

6. [www.lhwyled.com](http://www.lhwyled.com)



Light Up the Green World . LED Downlights Expert 7 Years



**12. Model No. SMDL001**  
**Square Surface Mounted Downlight**

| Model No.  | Power | Lumen(lm) | Driver Brand   | LED Style | CCT(K)                  | Beam Angle | Power Factor | CRI     | Size(mm) | Height(mm) |
|------------|-------|-----------|----------------|-----------|-------------------------|------------|--------------|---------|----------|------------|
| SMDL001-4F | 10W   | 850lm     | Philips Driver | CREE      | 3000K<br>4000K<br>5000K | 24°        | >0.90        | Ra80/90 | 80*80    | 103        |
| SMDL001-5F | 15W   | 1300lm    |                |           |                         |            |              |         | 100*100  | 112        |
| SMDL001-6F | 20W   | 1700lm    |                |           |                         |            |              |         | 120*120  | 133        |
| SMDL001-8F | 30W   | 2500lm    |                |           |                         |            |              |         | 150*150  | 142        |



**13. Model No. SD002**  
**LED Gimbal Downlight**

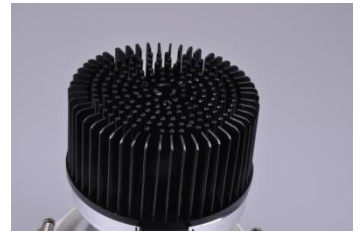
| Model No.  | Power | Lumen(lm) | Driver Brand   | LED Style   | CCT(K)                  | Beam Angle | Power Factor | CRI     | Size(mm)  | Cutout(mm) |
|------------|-------|-----------|----------------|-------------|-------------------------|------------|--------------|---------|-----------|------------|
| SD002-2.5F | 7W    | 550lm     | Philips Driver | CREE<br>COB | 3000K<br>4000K<br>5000K | 24°        | >0.90        | Ra80/90 | φ85*H78   | φ76        |
| SD001-4F   | 15W   | 1300lm    |                |             |                         |            |              |         | φ130*H110 | φ120       |
| SD001-5F   | 30W   | 2500lm    |                |             |                         |            |              |         | φ165*H143 | φ155       |
| SD001-6F   | 40W   | 3500lm    |                |             |                         |            |              |         | φ190*H155 | φ170       |

Warranty 3-5 Years

7. [www.lhwyled.com](http://www.lhwyled.com)



Light Up the Green World . LED Downlights Expert 7 Years



**14. Model No. HSTD001  
LED Wall Washer Downlight**

| Model No. | Power | Lumen(lm) | Driver Brand   | LED Style | CCT(K)                  | Beam Angle | Power Factor | CRI     | Size(mm)  | Cutout(mm) |
|-----------|-------|-----------|----------------|-----------|-------------------------|------------|--------------|---------|-----------|------------|
| HSTD001-A | 10W   | 850lm     | Philips Driver | CREE      | 3000K<br>4000K<br>5000K | 24°<br>38° | >0.90        | Ra80/90 | D90*H113  | D78        |
| HSTD001-B | 15W   | 1300lm    |                |           |                         |            |              |         | D90*H134  | D78        |
| HSTD001-C | 20W   | 1700lm    |                |           |                         |            |              |         | D120*H116 | D100       |
| HSTD001-D | 40W   | 3500lm    |                |           |                         |            |              |         | D160*H156 | D140       |



**15. Model No. ATD001  
Adjustable LED Downlight**

| Model No.        | Power      | Lumen(lm)        | Driver Brand   | LED Style       | CCT(K)                  | Beam Angle | Power Factor | CRI     | Size(mm)  | Cutout(mm) |
|------------------|------------|------------------|----------------|-----------------|-------------------------|------------|--------------|---------|-----------|------------|
| ATD001-A         | 10W        | 850lm            | Philips Driver | CREE<br>CITIZEN | 3000K<br>4000K<br>5000K | 24°<br>60° | >0.90        | Ra80/90 | D111*H90  | D80        |
| ATD001-B         | 15W        | 1300lm           |                |                 |                         |            |              |         | D120*H105 | D90        |
| ATD001-C         | 20W        | 1700lm           |                |                 |                         |            |              |         | D142*H120 | D110       |
| ATD001-D1/<br>D2 | 30W<br>40W | 2500lm<br>3400lm |                |                 |                         |            |              |         | D180*H130 | D145/D160  |
| ATD001-E1        | 40W        | 3400lm           |                |                 |                         |            |              |         | D194*H135 | D160       |

Warranty 3-5 Years





Light Up the Green World . LED Downlights Expert 7 Years



**16. Model No. TD057**  
**LED Downlight with Lens**

| Model No. | Power | Lumen(lm) | Driver Brand   | LED Style | CCT(K) | Beam Angle | Power Factor | CRI     | Size(mm)  | Cutout(mm) |
|-----------|-------|-----------|----------------|-----------|--------|------------|--------------|---------|-----------|------------|
| TD057-A   | 15W   | 1300lm    | Philips Driver | CREE      | 3000K  | 24°        | >0.90        | Ra80/90 | D115*H80  | D95        |
| TD057-B   | 30W   | 2500lm    |                |           | 4000K  | 38°        |              |         | D142*H101 | D125       |
| TD058-C   | 40W   | 3300lm    |                |           | 5000K  | 60°        |              |         | D160*H123 | D140       |



**17. Model No. TSD0808**  
**Oblique Downlight Square**

| Model No. | Power | Lumen(lm) | Driver Brand   | LED Style | CCT(K) | Beam Angle | Power Factor | CRI     | Size(mm) | Cutout(mm) |  |            |         |
|-----------|-------|-----------|----------------|-----------|--------|------------|--------------|---------|----------|------------|--|------------|---------|
| TSD0808-A | 10W   | 800lm     | Philips Driver | CREE      | 3000K  | 24°        | >0.90        | Ra80/90 | SQ95*H98 | 80*80      |  |            |         |
| TSD0808-B | 15W   | 1200lm    |                |           | 4000K  |            |              |         |          |            |  | SQ115*H120 | 100*100 |
|           |       |           |                |           | 5000K  |            |              |         |          |            |  |            |         |

Warranty 3-5 Years



Light Up the Green World . LED Downlights Expert 7 Years



**18. Model No. TSD0816**  
**Spot Downlight**

| Model No. | Power | Lumen(lm) | Driver Brand   | LED Style | CCT(K) | Beam Angle | Power Factor | CRI     | Size(mm)   | Cutout(mm) |
|-----------|-------|-----------|----------------|-----------|--------|------------|--------------|---------|------------|------------|
| TSD0816-A | 10W   | 850lm     | Philips Driver | CREE      | 3000K  | 24°        | >0.90        | Ra80/90 | SQ75*H65   | D70        |
| TSD0816-B | 15W   | 1300lm    |                |           | 4000K  |            |              |         | D90        |            |
| TSD0816-C | 20W   | 1700lm    |                |           | 5000K  |            |              |         | SQ135*H110 | D115       |



**19. Model No. DD001-1**  
**LED Grille Light 1 Head**

| Model No. | Power | Lumen(lm) | Driver Brand   | LED Style  | CCT(K)     | Beam Angle | Power Factor | CRI     | Size(mm)   | Cutout(mm) |
|-----------|-------|-----------|----------------|------------|------------|------------|--------------|---------|------------|------------|
| DD001-1-A | 10W   | 850lm     | Philips Driver | CREE       | 3000K      | 24°        | >0.90        | Ra80/90 | SQ140*H144 | 125*125    |
| DD001-1-B | 15W   | 1300lm    |                | CITIZEN    | 4000K      | 60°        |              |         | SQ160*H163 | 145*145    |
| DD001-1-C | 25W   | 2200lm    |                | 5000K      | SQ190*H173 | 170*170    |              |         |            |            |
| DD001-1-D | 40W   | 3400lm    |                | SQ203*H188 | 185*185    |            |              |         |            |            |

Warranty 3-5 Years



Light Up the Green World . LED Downlights Expert 7 Years



**20. Model No. DD001-2**  
**LED Grille Light 2 Heads**

| Model No. | Power | Lumen(lm) | Driver Brand   | LED Style    | CCT(K)       | Beam Angle | Power Factor | CRI     | Size(mm)     | Cutout(mm) |
|-----------|-------|-----------|----------------|--------------|--------------|------------|--------------|---------|--------------|------------|
| DD001-2-A | 2*10W | 2*850lm   | Philips Driver | CREE         | 3000K        | 24°        | >0.90        | Ra80/90 | 260*140*H144 | 245*125    |
| DD001-2-B | 2*15W | 2*1300lm  |                | CITIZEN      | 4000K        | 60°        |              |         | 320*160*H163 | 305*145    |
| DD001-2-C | 2*25W | 2*2200lm  |                | 5000K        | 375*190*H173 | 355*170    |              |         |              |            |
| DD001-2-D | 2*40W | 2*3400lm  |                | 405*203*H188 | 385*185      |            |              |         |              |            |



**21. Model No. DD001-3**  
**LED Grille Light 3 Heads**

| Model No. | Power | Lumen(lm) | Driver Brand   | LED Style | CCT(K)       | Beam Angle | Power Factor | CRI     | Size(mm)     | Cutout(mm) |
|-----------|-------|-----------|----------------|-----------|--------------|------------|--------------|---------|--------------|------------|
| DD001-3-A | 3*10W | 3*850lm   | Philips Driver | CREE      | 3000K        | 24°        | >0.90        | Ra80/90 | 372*140*H144 | 360*125    |
| DD001-3-B | 3*15W | 3*1300lm  |                | CITIZEN   | 4000K        | 60°        |              |         | 462*160*H163 | 450*145    |
| DD001-3-C | 3*25W | 3*2200lm  |                | 5000K     | 538*190*H173 | 520*170    |              |         |              |            |

Warranty 3-5 Years